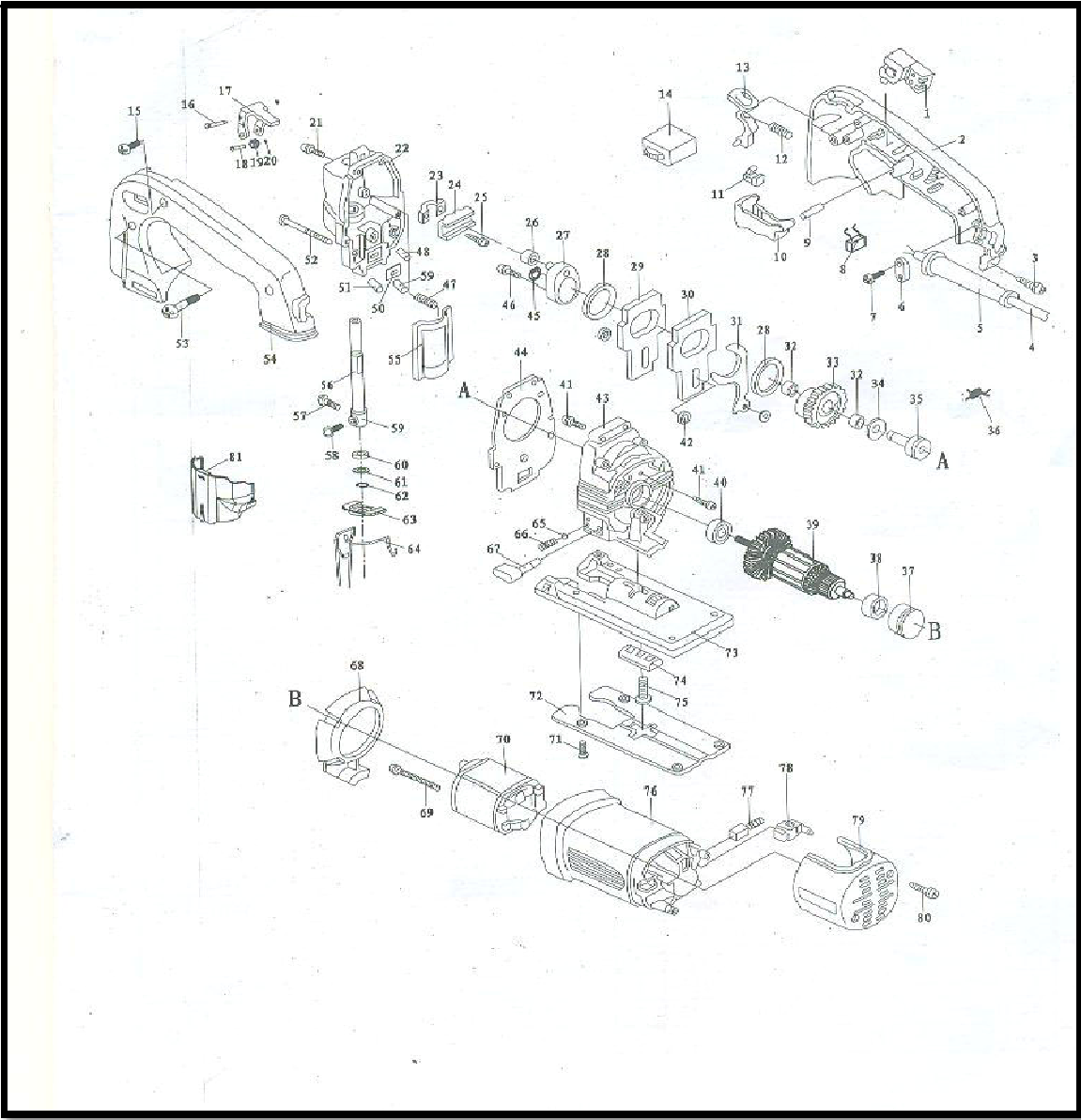


POWER TOOLS

PRO 1065 A - JIG SAW

Packing	Power	Specifications	Mode
8	600 W	65 MM	BMC



PRO 1065 A- JIG SAW

NO.	Name of Spare parts	NO.	Name of Spare parts
1	Switch	42	Flat Washer 6
2	Handle (Right Half)	43	Gear Box
3	Screw ST4x14	44	paper Washer
4	Cord	45	Circlip 8
5	Cord Sleeve	46	Screw M5x16
6	Cord Anchor	47	Spring 4
7	Screw ST4x14	48	Column Pin 5x23
8	Capacitor	49	Column Pin 6x30
9	Column Pin 3x22	50	Rubber Washer
10	Switch Protector	51	Column Pin 3x10
11	Location Pin	52	Screw ST4x55
12	Compression Spring	53	Screw STRx55
13	Lock On Button	54	Handle (Left Half)
14	Speed Control	55	Bow
15	Screw ST4x18	56	Plunger Rod
16	Roller Pin	57	Hex Bolt M6x7
17	Ruller Bracket	58	hex Bolt M6x8
18	Roller Pin 4	59	Blade Chuck
19	Roller	60	Rubber Washer
20	Circlip 4	61	Flap washer 16
21	Screw ST4x20	62	Circlip for Hole 16
22	Gear Box Cover	63	Raubber protector
23	Reciprocating Bar Clamp	64	Steel Frame
24	Yoke	65	Steel Ball 4
25	Screw M4x8	66	Spring 4
26	Bush 8x14x12	67	Orbital lever
27	Cam	68	Air deflector
28	Flat Washer 26	69	Screw ST4x60
29	Conterpart Block	70	Stator
30	Conterpart Block	71	Screw M5x8
31	Fork lever	72	Sub Base
32	Bearing HK0910	73	Alu. Base
33	Eccentric Gear	74	Base Clamp
34	Flat Washer 26 8	75	Hex Bolt M6x22
35	Gear Shaft	76	Housing
36	Inductance	77	Carbon Brush
37	Bearing Brush	78	Bruish Holder
38	Bearing 607	79	Rare Cover Screw ST4x22
39	Armature	80	Screw ST4x22
40	Bearing 608	81	Transparent Guard
41	Screw M4x12		