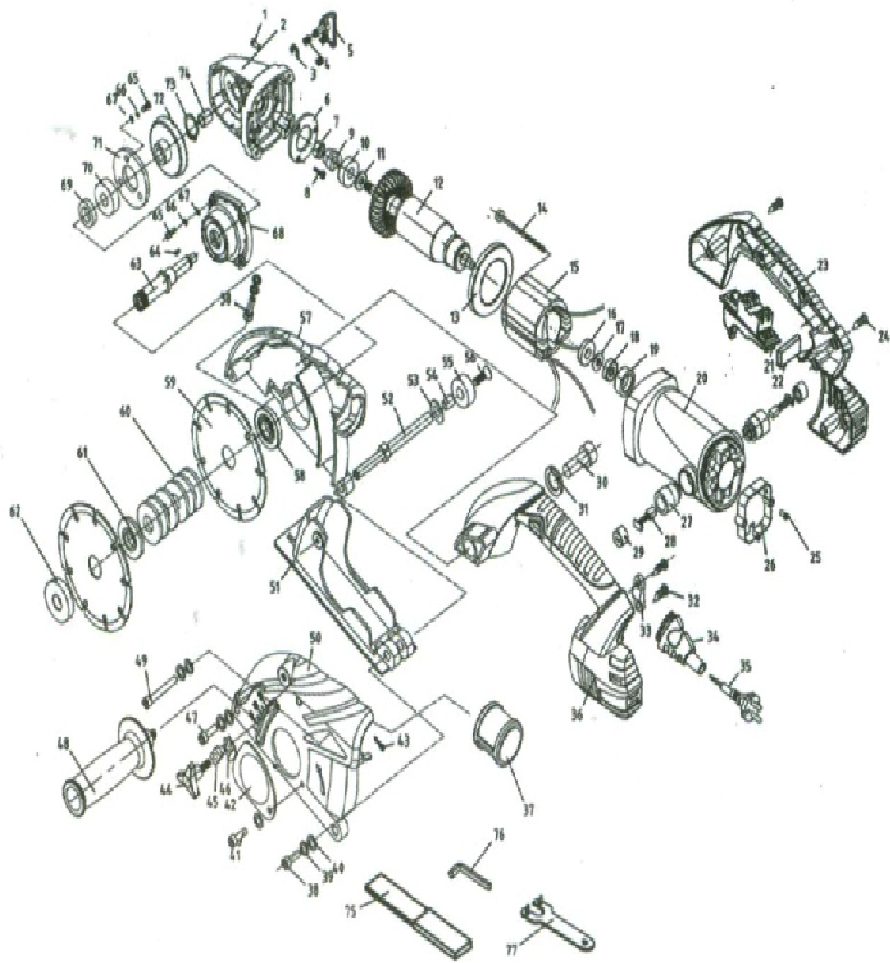


**POWER TOOLS**

**PRO 5120 A - A WALL CHASER SLOTTER**

| Packing | Power  | Specifications | Mode |
|---------|--------|----------------|------|
| 2       | 1700 W | 125 MM.        | BMC  |



## **PRO 5120 A - A WALL CHASER SLOTTER**

| <b>NO.</b> | <b>Name of Spare parts</b>   | <b>NO.</b> | <b>Name of Spare parts</b> |
|------------|------------------------------|------------|----------------------------|
| 1          | Self Tapping Screws ST4 x 22 | 39         | 6 Washer                   |
| 2          | Gear Box                     | 40         | 6 Spring Washer            |
| 3          | 6 Circlip                    | 41         | M6 x 8 hexagon Bolt        |
| 4          | Spring                       | 42         | Cover                      |
| 5          | Lock                         | 43         | Pin                        |
| 6          | 6000 Bearing Cover           | 44         | Knob                       |
| 7          | M8 Hexagon nut               | 45         | Locking Cap                |
| 8          | M5 x 12 Screw                | 46         | Ruler                      |
| 9          | Driving Gear                 | 47         | Hexaon Bolt M6 x 40        |
| 10         | 6000 Bearing                 | 48         | Assistant Handle           |
| 11         | Washer 10                    | 49         | Hexagon Bolt M6 x 55       |
| 12         | Rotor                        | 50         | Outer Guard                |
| 13         | Fan Baffle                   | 51         | Active Guard               |
| 14         | ST4 x 75 Screw               | 52         | shaft                      |
| 15         | Stator                       | 53         | 8 Washer                   |
| 16         | Magnitic Disc                | 54         | Pin                        |
| 17         | Washer 8                     | 55         | Roller                     |
| 18         | 608 Bearing                  | 56         | M8 x 25 Screw (Left)       |
| 19         | Bearing Sleeve               | 57         | Inner guard                |
| 20         | Housing                      | 58         | Clamping Flanmge           |
| 21         | Switch                       | 59         | Disc                       |
| 22         | Capacitor 0.33 uF            | 60         | 125x 22.22x2               |
| 23         | Handle (Right)               | 61         | Spacer (1)                 |
| 24         | ST4 x 18 self tapping screw  | 62         | Spacer (2)                 |
| 25         | ST3 x14 Screw                | 63         | Flange Nut                 |
| 26         | PCB                          | 64         | Shaft                      |
| 27         | Brush Holder                 | 65         | Key 4x13                   |
| 28         | Carbon brush                 | 66         | Spring Washer 4            |
| 29         | Brush Holder Cap             | 67         | Washer 4                   |
| 30         | Hexagon Bolt M10 x 20        | 68         | Bearing end Plate          |
| 31         | 10 Washer                    | 69         | Seal 15 x 25 x 6           |
| 32         | Screws ST4 x 18              | 70         | 6201 Bearing               |
| 33         | Cable Pressing Board         | 71         | 6201 Bearing Cover         |
| 34         | Cable Sleeve                 | 72         | Driven gear                |
| 35         | Cable & Plug                 | 73         | Circlip 12                 |
| 36         | Handle (Left)                | 74         | Needle Bearing HK0810      |
| 37         | Dust outlet                  | 75         | Chisel                     |
| 38         | Hexagon BoltM6 x 25          | 76         | Hexagon Wrench             |
|            |                              | 77         | Wrench                     |